

Ontrol N4 Sedona driver & programming tool

To program a Sedona device, you connect to it through a running Niagara station.

- If the Sedona device is on a remote Jace, you simply open the remote station.
- To program a Sedona device directly from your Workbench, you will need to run a station on your local PC.

In either case, the station will need to be able to access Sedona kit and platform files. Therefore, you need to copy these files to one or more locations as per instructions below.

Ontrol Sedona Package

Required files are distributed as an archive file named “Ontrol Sedona Package yymmdd.zip”. This archive has 3 folders, which need to be copied into different locations on your PC.

modules: The jar files in this folder will be copied to your Niagara installation’s modules folder, e.g. C:\Niagara\Niagara-4.13.2.18\modules

sedona: This folder needs to be completely copied to the two user home folders in your Niagara Installation – Workbench User Home and Station User Home. See below for further information.

bin: The DaspOnSerial utility can be found in this folder. This utility is used to facilitate serial connection into Ontrol’s RION and ORION devices. Copy this utility to any convenient location on your PC.

Copying Sedona Files to Niagara User Home locations

You need to copy the sedona folder to two locations:

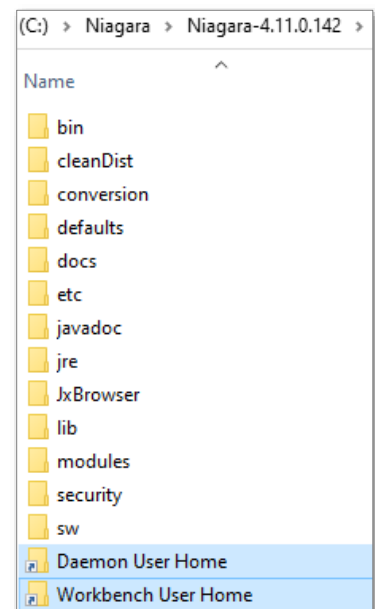
- {Workbench User Home}/shared
- {Daemon User Home}/shared

There are shortcuts to both these locations in your Niagara installation. →→

You may need to create the **/shared** folder if it doesn’t exist.

The copied files will include:

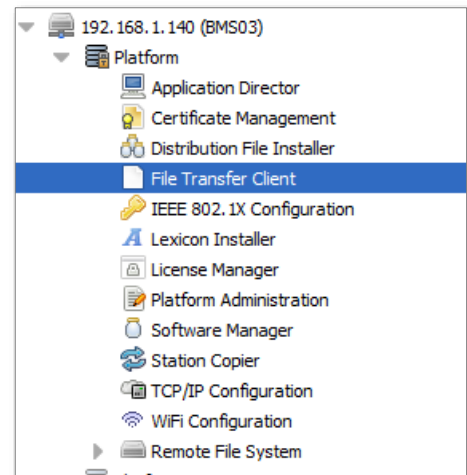
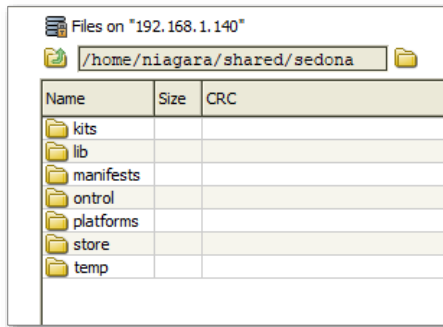
- Platform files for the device you are connecting to.
- Kit and/or manifest files for the kits used in the app you are connecting to.



Installation on a JACE

A station running on a Jace also needs the sedona files for functioning. Use the File Transfer Client under Platform to copy files to a remote Jace. →→

Copy only the kit and platform files to the remote station's "/home/niagara/shared/sedona" folder:



Running a station on the local PC

To program a sedona device directly from your workbench, you connect to it through a running Niagara station. Therefore, you need to start a station on your engineering PC. Once you have that:

- Add a SedonaNetwork to the Drivers folder.
- Discover and add your Sedona device (if the device doesn't support discovery, you can also add it manually).
- In the navigation pane, expand the sedona device and navigate down to 'SoxClient'
- Expanding beyond that, you'll find the 'Sedona Tools' and 'Sedona Gateway' headings.
- 'Sedona Gateway' allows access to property-sheet, wire-sheet views of the app running within the sedona device.
- 'Sedona Tools' contains tools for back up, restore and kit management:

